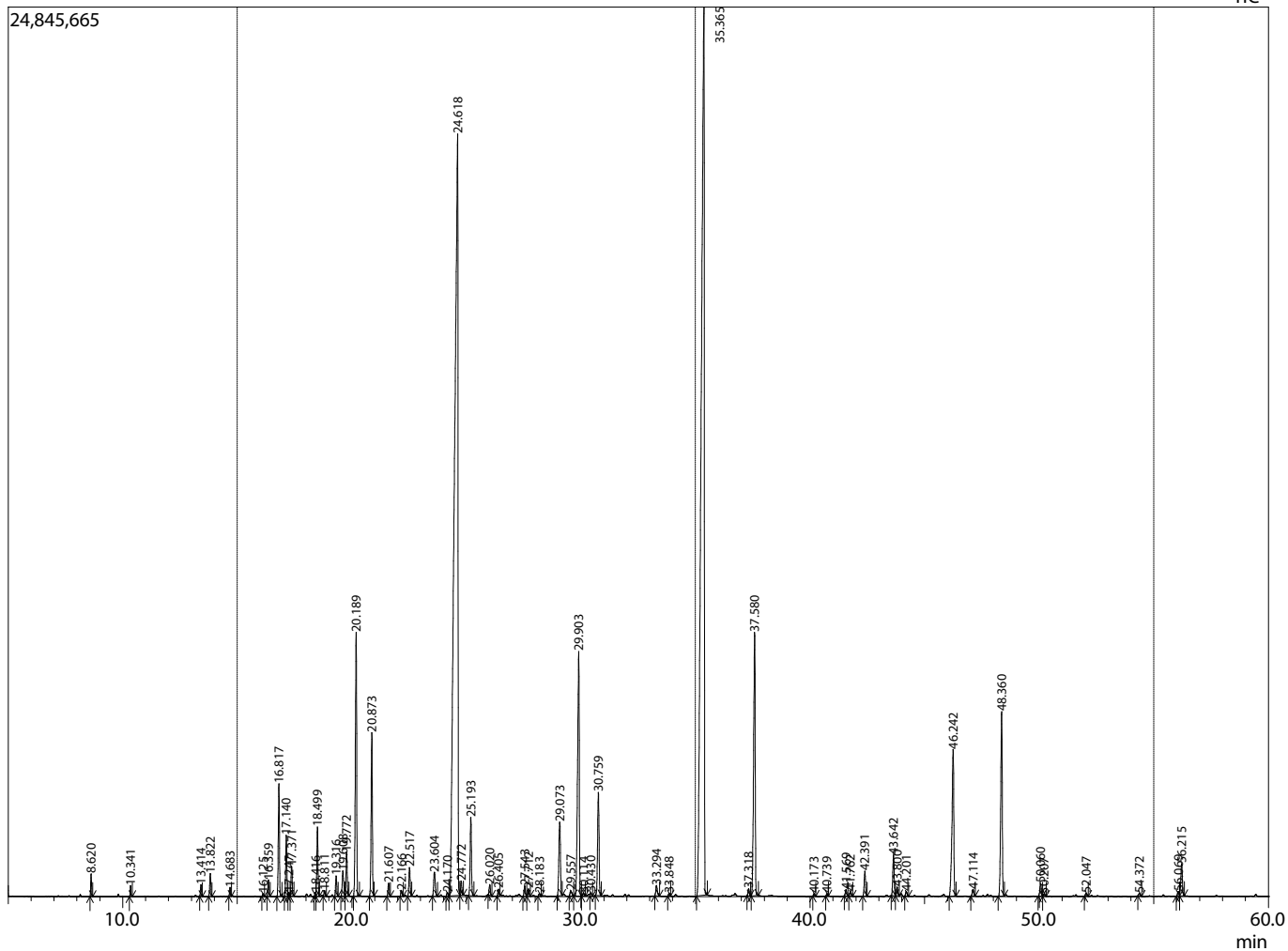


Sample Information

Analyzed by : R Nacheva  
 Analyzed : 12:24:34 2018/1/11 AM  
 Sample Type : Essential Oil  
 Sample Name :  
 Sample ID : D103118E  
 Injection Volume : 1.00  
 Data File :



R.Time	Name	Area%
8.620	Hexane, -1methoxy-[RT14.391, PI0.206	[850
10.341	Hexanol <n> [RT 17.38, AI0.109	[863
13.414	Thujene <alpha>	0.131
13.822	Pinene <alpha>[RT22.163, AI 0.290	[939
14.683	Camphene [RT 23.475, AI 0.106	[954
16.125	Sabinene	0.034
-1 16.359	Octen-3-ol[RT25.891, AI0.216	[974
16.817	3-Octanone	1.495
17.140	Myrcene	0.792
17.247	Carvone <dihydro-cis> [RT43.785, AI0.051	[1191
17.371	Octanol <3>	0.401
18.416	3-Carene	0.045
18.499	Hexyl acetate[RT28.486, AI0.934	[1007
18.811	Terpinene <alpha>	0.081
19.316	Cymene <para>	0.273
19.608	Limonene [RT 30.079, AI 0.428	[1029
19.772	1,8-cineole	0.600
20.189	Ocimene <Z-beta>	4.011
20.873	Ocimene <E-beta> [RT31.251, RI2.361	[1044
21.607	Terpinene <gamma>	0.190
-4 22.166	Thujanol <trans> [RT33.145, AI0.090	[1065
22.517	Linalool oxide <trans-(pyranoid)> [RT34.51, A	0.424
23.604	Linalool oxide <cis-(furanoid)> [RT33.211, AI1	0.452
24.170	Thymol Isomer@ 51.14	0.054
24.618	Linalool	31.021
24.772	ULavender@ 35.943	0.211
25.193	Octen-3-yl acetate<1>	1.167
26.020	3-Octyl acetate	0.151
26.405	Ocimene <allo>	0.102
27.543	Camphor	0.159
27.712	Hexyl isobutyrate @0.112	1152,39.232
28.183	Prenyl acetate[RT21.241 ,AI0.037	[929
29.073	Lavandulol	1.357
29.557	Penta cyclohexadiene isomer [RT41.54, AI115	0.103
29.903	Terpinen-4-ol [RT41.860, AI4.682	[1177
30.114	p-Cymen-8-ol	0.042
30.430	Cryptone	0.043
30.759	Terpineol <beta>	1.745
33.294	Nerol[RT45.229, AI0.185	[1227
33.848	Butanoate <-3methylpentyl-,3methyl>	0.040
35.365	Linalyl acetate	31.140
37.318	Bornyl acetate	0.108
37.580	Lavandulyl acetate	4.828
40.173	Tiglate hexyl	0.036
40.739	Unknown	0.035
41.569	Epoxy-.alpha.-terpenyl acetate	0.099
41.762	Epoxy-.alpha.-terpenyl acetate	0.079
42.391	Neryl acetate	0.399
43.642	Geranyl acetate	0.657
43.800	Hexyl hexanoate[RT56.815, AI0.138	[1382
44.201	Sesquithujene <7epi> [RT56.981, AI0.076	[1390
46.242	Caryophyllene	3.062
47.114	Bergamotene <trans-alpha> [RT 60.162 AI 14	0.130
48.360	Farnesene<(E)-beta>	3.265
50.060	Germacrene D	0.220
50.207	Farnesene <(E)-, beta>	0.040
52.047	Cadinene <gamma>	0.048
54.372	Caryophyllene oxide	0.046
56.069	Caryophyllene oxide	0.080
56.215	Caryophyllene oxide	0.582
		100.000



Comments:

Typical Ranges of Main Components: